

# NEWSLETTER

## Mine Update

As the world economy slows, demand for steel making raw materials has softened. Baralaba expects markets to remain soft for the foreseeable future and is adjusting accordingly. On a more positive note, several of our long term customers have increased their contracted tonnages during the second half of 2024.

Jacob Orbell commences as the Baralaba General Manager in October who is based predominately at the Mine. Jacob has spent considerable time working in the resource sector and looks forward to getting involved in the local community.

Baralaba has reviewed the feedback received from the recent EIS public notification process and is currently completing further flora and fauna seasonal studies. If you haven't yet seen, Baralaba has recently launched a Facebook page, Baralaba Coal Company, to share a little more on how we conduct our operations.

## Baralaba South Update

Work continues addressing concerns & issues raised in the EIS Submissions.

A "Request to extend period under Environmental Protection Act 1994 (EP Act) Environmental Impact Statement (EIS) assessment process" was submitted which will allow BCC the time to formally address all the submissions. BCC has been granted this request with an extension until 15 June 2026. Refer Current projects | Environment, land and water | Queensland Government ([www.qld.gov.au](http://www.qld.gov.au))

Prior to the end of this extension period, BCC will submit a summary of all the submissions, and a final amended EIS, addressing concerns/issues raised in the submissions, for DESI to finalise its review and assessment.

Although a 2-year extension was provided. BCC will aim to finalise all the work and resubmit in mid to later 2025.



## Sponsorship

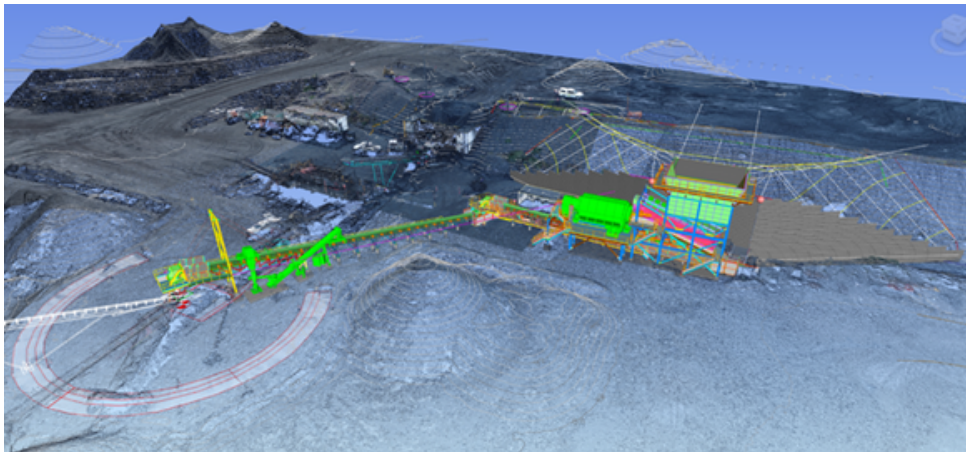
BCC has proudly supported the following groups through sponsorship

- Baralaba Fishing Competition
- Baralaba Golf Club - BMW Finals
- Man Up
- Baralaba School - NAIDOC Week
- Baralaba School P&C - Rodeo

# The Cows Are Lining Up!

The Baralaba Central rehabilitation is in good shape heading into Spring. 10 months have passed now since the 200-hectare final landform was seeded and fertilised. The first annual rehabilitation monitoring event is scheduled for October 2024. This monitoring event along with those subsequent will guide BCC on when Grazing can commence. Monitoring will include establishing permanent vegetation transects to monitor ground cover and species richness, photographic monitoring, erosion monitoring, weed monitoring and topsoil characterisation. Maintenance activities such as weed treatment are undertaken as necessary.

BCC are looking forward to the first areas at Baralaba North becoming available for rehabilitation in 2025.



# Coal Handling Plant – Major Upgrade

Works have commenced towards the build and installation of a new Coal Handling Plant onsite at Baralaba Mine.

- Design stage completed
- Concrete works – preferred contractor to be announced soon
- Civil earthworks will be completed by Hynes Earthmoving (Baralaba)
- Facility steel fabrication and installation will be completed by Xtreme Engineering (Gladstone)
- EICs supply and installation will be completed by Chess Electrical (Mackay)

The coal handling plant major components the rotary breaker and apron feeder has been manufactured and assembled by McLanahan and is waiting delivery to site.

The project is expected to be completed in Q2 CY25.



For more information follow our Baralaba Coal Company Facebook Page



or

Scan the QR code to visit our website [www.baralabacoal.com.au](http://www.baralabacoal.com.au)

